



TREE CARE LINE OF PRODUCTS

ATF BE AGILE, UNLOCK POTENTIAL.

NON-CONTRACTUAL PHOTO. ACTUAL PRODUCT MAY VARY FROM THE ONE SHOWN.

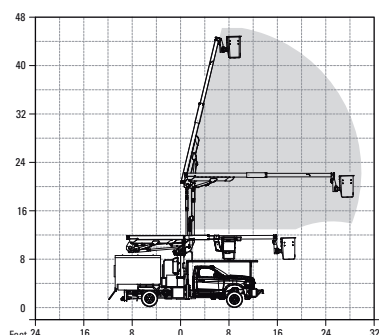
TELESCOPIC ARTICULATING AERIAL DEVICES

GENERAL SPECIFICATIONS

EQUIPMENT	ATF40
Working height	46.5 ft / 14,2 m
Ground to bottom of the platform	41.5 ft / 12,7 m
Maximum side reach	28.5 ft / 8,7 m
Stowed travel height	11.9 ft / 3,7 m
Telescopic boom extension	116 in / 2,9 m
Platform capacity	400 lb / 182 kg
Platform dimensions	24" x 24" x 42 in / 610 x 610 x 1070 mm
Rotation	360° continuous infinite

REACH DIAGRAM

ATF40



STANDARD FEATURES

- Emergency stop valves at the upper and lower control stations
- End mount, non rotating platform
- Lower controls with override to the platform
- 4 Function single-hand Control
- Automatic Hydraulic Platform Leveling System
- Gear and pinion rotation drive
- Oil level gauge with temperature indicator
- Self-lubricating bushings
- 1 set "A" frame-outriggers
- Holding valves integrated in hydraulic cylinders
- Insulated 46 kV Category C
- Chassis insulating arm and Link
- Liner
- Hydraulic tool circuit at platform
- Engine Start/Stop at platform
- Outrigger Boom Interlock System
- Electric emergency pump at platform
- Hydraulic bucket tilt
- Pressure diagnostic quick coupling
- Vynil platform and insert cover
- Outrigger motion alarm
- Chip Box provides excellent payload capacity
- AXIONLIFT meets or exceeds ANSI A92.2 standards

SERVICE AND PARTS SUPPORT

833-34-FLY-AX (35929) / support@axionlift.com

Manned by expert in-house & mobile technicians, specializing in inspections, repairs & preventative maintenance.